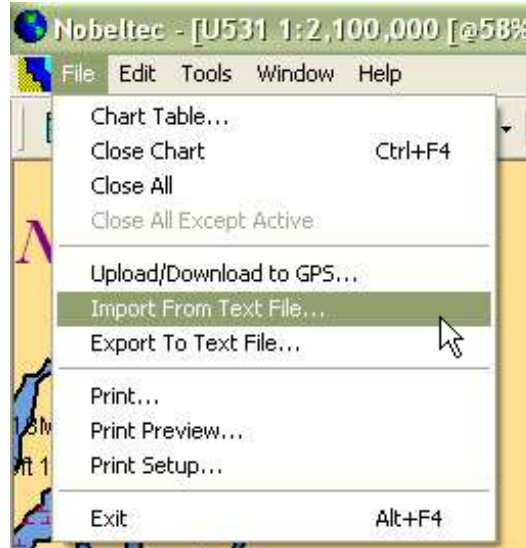


Neptune Route import instructions

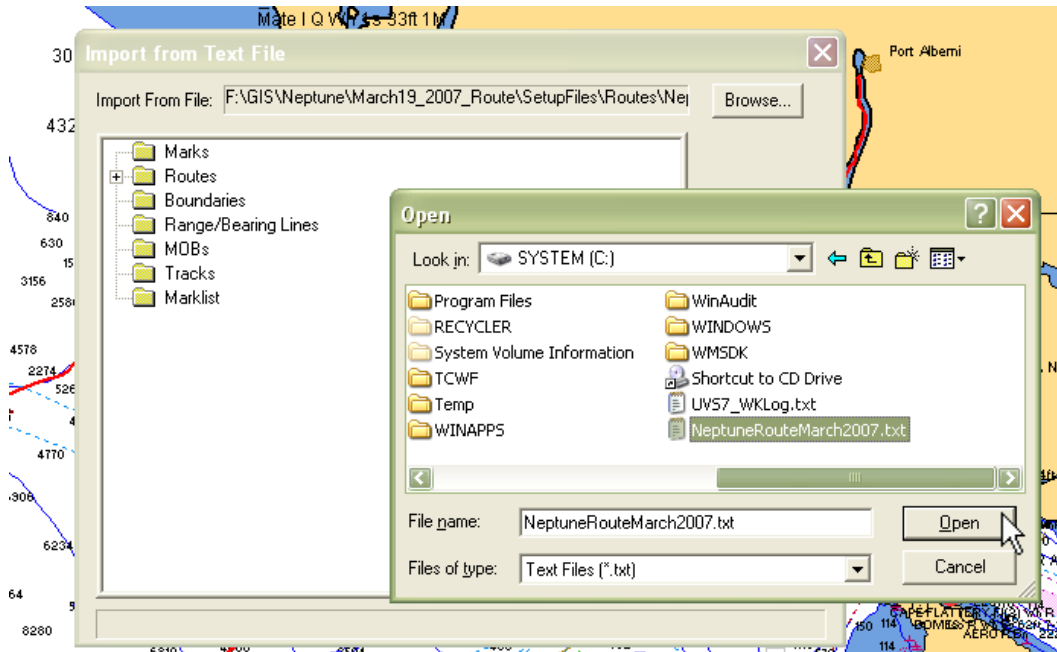
(Note: These instructions were developed using **Nobeltec v.6.5**, other versions of Nobeltec will look slightly different but should be similar.)

1. Copy the **NeptuneLayout2009.txt** file onto your system into a directory you can easily find such as c:\.
2. Open Nobeltec.
3. Go to the file menu and select Import from text file.

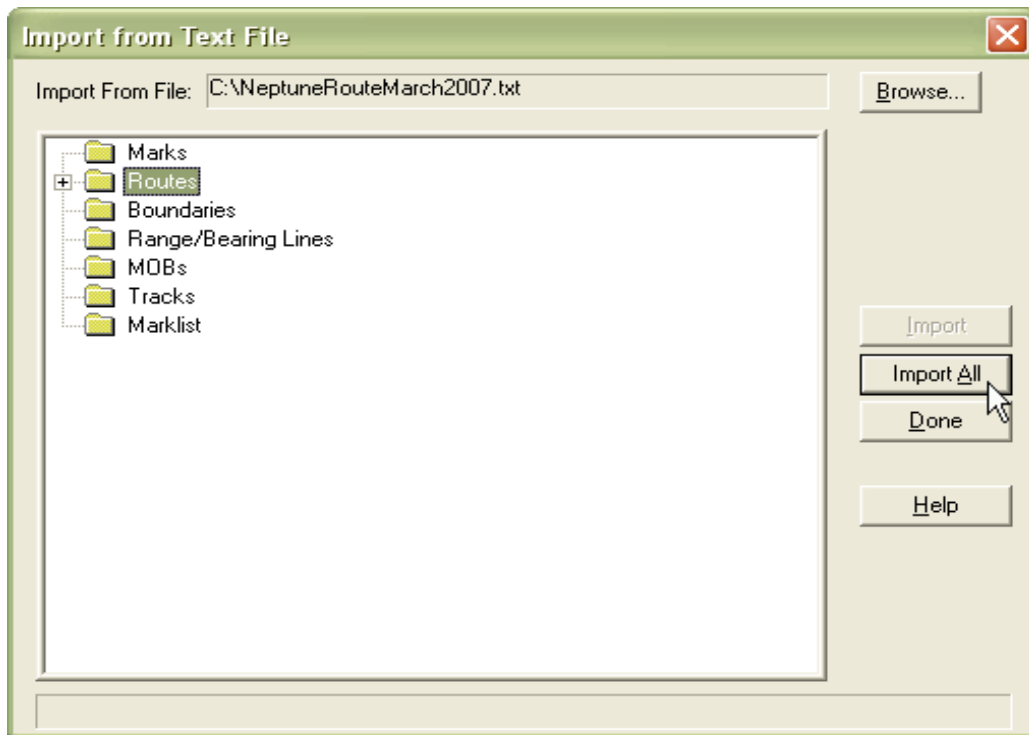



(In versions 7 and up the menu item you will choose is called Navigation Objects > Import Nav Objects..., the following screens will look the similar to those below).

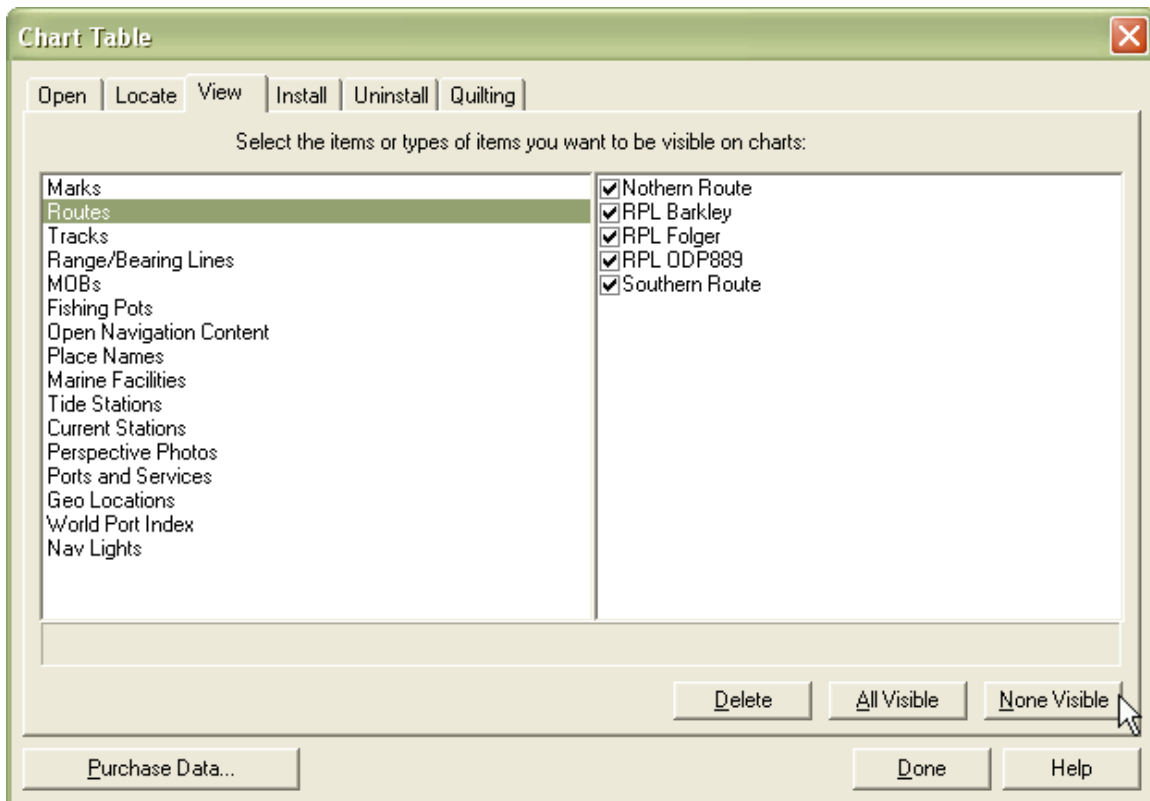
4. Browse to where you have placed the **NeptuneLayout2009.txt** file.



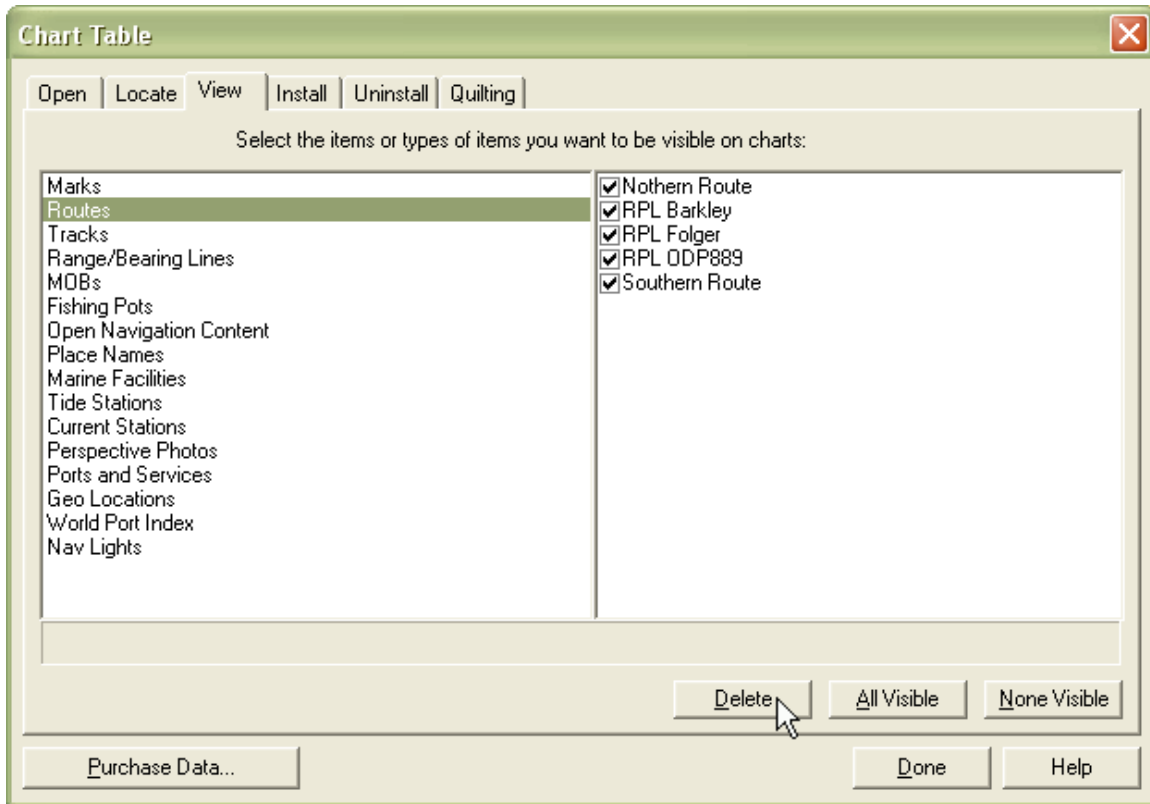
5. Select Import all and press Done. There are 5 routes that will be imported.



If you would like to turn the Routes off select the chart icon  or go to file – chart table. Select the view tab and select Routes and click None Visible.



To completely remove the Neptune route select all the routes in the view tab and select Delete. To put the routes back on your system you will need to re-import them.



In later versions the Chart Table dialog box will look different but you can still Hide all routes by selecting Hide All in the objects tab when you have Routes selected. If you have other routes you simply click off the RPL Barkley, RPL ODP889, RPL Folger and Northern Route to hide them.

Earlier versions of Nobletec may show a straight line from the end of the routes to the beginning of the route. Please note that this is not part of the route.